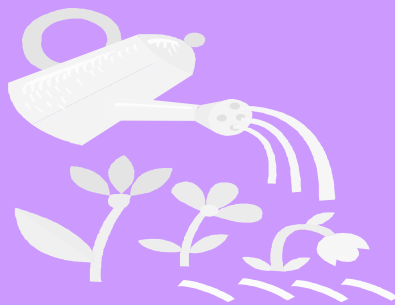


Oakhill Garden Nursery

**Field Grown Perennial
Iris and Daylily Plants**



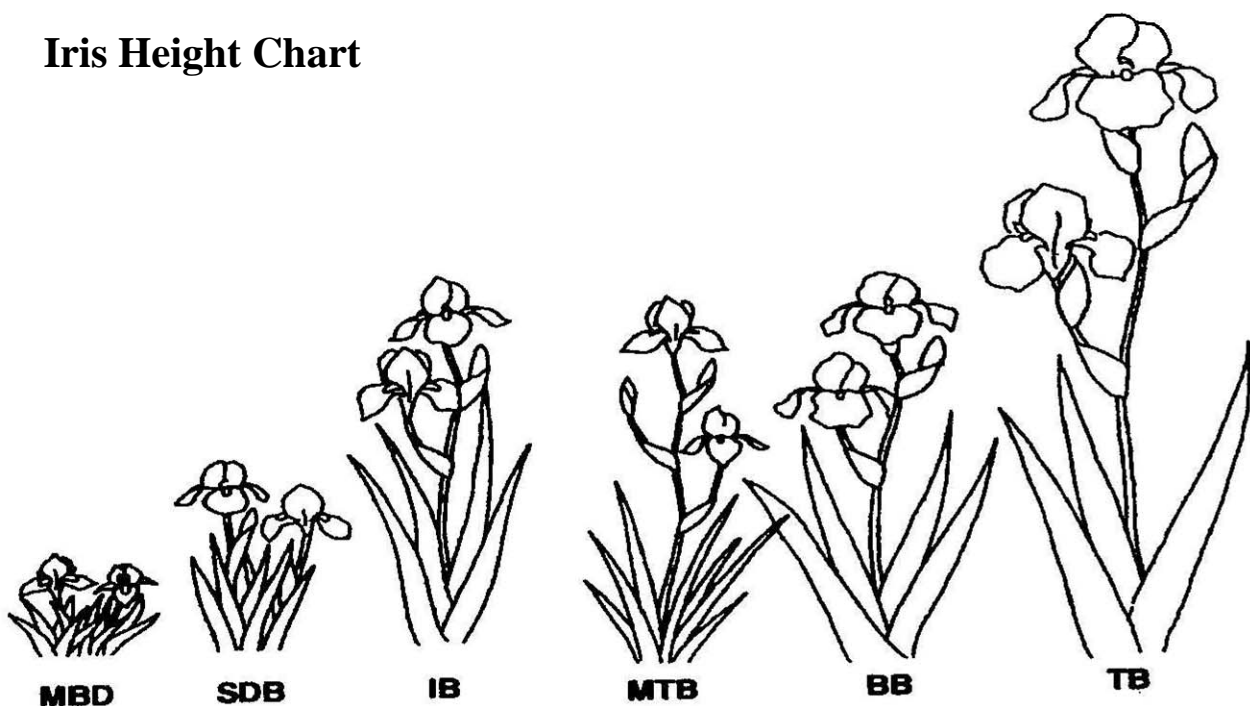
2005 Catalog

Dear fellow gardeners ,

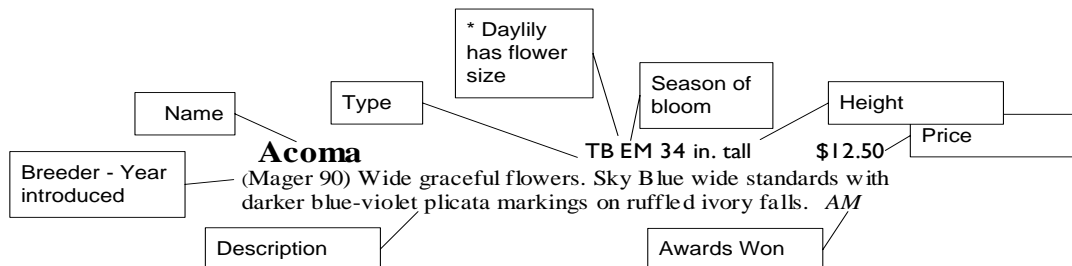
It is my pleasure to welcome you to this years catalog. For those of you who are current customers and those who are soon to be new customers, I sincerely extend a hand in friendship and look forward to working with you. I have learned much about both plants and people in my gardening career but I am always ready to learn more. So many fellow gardeners have taught me to be receptive to new ideas and to unearth the wisdom of past days. Thus one eye to the future and one eye to the past keeps one always prepared. 2005 sees my nursery full of great hardy plants and improvements for getting you the plants that you deserve. I have instituted a shopping cart system on our web site that assures the security of online shopping with Visa and MasterCard for your convenience. I am making appearances in Farmers Markets in the Chicagoland area this summer with a new booth full of rhizomes and iris material. I have increased the number of new plants by about 600 varieties and moved plants from my Canadian nursery to here in Indiana. Visit our website <http://oakhillgarden.com> where all plants have colored pictures and where we have much more information than is available in this printed version. For newbies I have created a **Dummies Guide to Growing Iris** section and a large library of iris related information. So enjoy! You are invited to the **Oakhill Garden Spring Festival** which is being held on three consecutive weekends this spring where we are featuring many star plants who no doubt will flower superbly as iris always do. Please call ahead for viewing appointments for the Siberian and the Daylily plants which flower later than our Iris Festival. New this year is the **Collections** series which are a specially priced group of iris that provide maximum cost reduction based on thematic color combinations/flowered timing, and the special effect that we as gardeners are always striving for in our labors of love for the earth and our environments. Rebloomers are very big and we have made every effort to indicate in which zone they reliably rebloom. Again our web site has a great chart to indicate what plants do well in what zone. One thing to remember is that our mid-west grown iris often rebloom in warmer climates whereas iris from warmer climates do not rebloom here as easily. And also shipping from our central location means plants are in transit less time than from anywhere else. The chart below shows the extent of size of iris and can be used to help decide where and how you wish to use iris in your garden. Many gardeners are looking for more compact dwarf plants for urban areas and I think the variety that we offer is great. Happy Gardening.

Tom

Iris Height Chart



How to Read this Catalog



Types of bearded iris:

MDB - miniature dwarf bearded, to 8" (20cm) tall, the first bearded to bloom in earliest spring.

SDB - standard dwarf bearded, 8" to 16" (21-40cm) tall, blooms in early spring.

IB - intermediate bearded, 16.5" to 27.5" (41-70cm) tall, blooms after SDB's and before TB's.

MTB - miniature tall bearded, 16 to 27.5" (41-70cm) tall, flowers no more than 6" (15cm) combined width with height, blooms with TB's.

BB - border bearded, 16 to 27.5" (41-70cm) tall, blooms with the tall bearded.

TB - tall bearded, more than 27.5" (71cm) tall, blooms mid to late spring.

SPEC - species iris, as originally collected from or found in the wild.

Median - all bearded iris classes (SDBs, IBs, BBs and MTBs) shorter than 27.5", except the MDBs.

Awards- Dykes Medal (DM), Knowlton Medal (KM), Morgan Award (MA) 1952-1894, Morgan-Wood Medal (MW) 1986-present, Award of Merit (AM), Honorable Mention (HM)

Bloom Season -Very Early (VE) Early (E) Midseason (MS) Midseason Late (ML) Late (L) Very Late (VL) Reblooms (RE)

Parts of an iris flower

S - standards - The upturned three petals (technically called sepals) that surround the three style arms.

F - Falls - The down turned (can be horizontally flared) three petals that possess beards.

B - Beards - Elongate groups of fuzzy hairs in the middle at the upper base of all three falls.

Spoons - Appendages extending from the tip of the beards that widen into spoon shaped petioles.

Horns - A protrusion or extension of the beards, often ending in a point or may be hair covered, often called Space Age.

Flounces - Wide, folded, often canoe or fan shaped appendages extending from the tips of the beards.

Style Arms - The three double crested structures inside the three standards, whose horizontal stigmatic lips are pollinated.

Hafts - Areas on each side of the narrow base of the falls, on each side of the beard.

Shoulders - The areas on the arching upper middle part of the falls on each side just beyond the haft areas.

Visit the website for color photos of all plants

<http://oakhillgarden.com>

Ordering Information and Policy

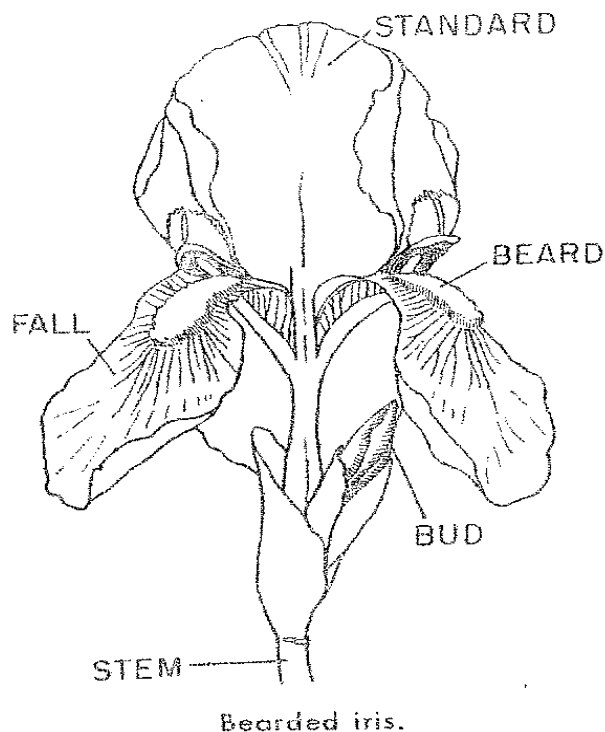
We accept Visa/MasterCard, cheques, and money orders. Order early to assure your choice is still available.

We ship Siberians early in the spring—March-June/August-September, and Iris beginning early July—September. Daylilies are shipped from July-September.

All plants are guaranteed to flower the following year. Planting instructions are included with each order.

Substitutions may be used unless requested not to.

Shipping/handling is done via the US mail and is \$5.00 for an order and \$.50 per plant. There is no minimum order. **Bonus plants** accrue after each \$20.00 increment on the order!



Bearded iris.

Oakhill Garden

2005 Spring Festival

410 Oak Hill Road
Porter Indiana

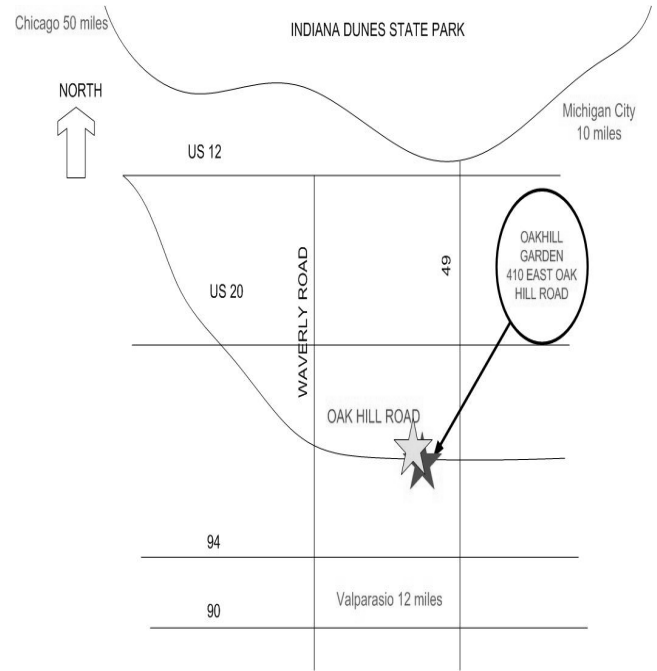
Sat/Sun

May 21-22

May 28-29

June 4-5

10 AM-5 PM



Map to Oakhill Garden

Spring Garden Festival featuring flowering Iris—3 weekends
with Music, Flowers, Garden Folk Art and Fun for all Ages.

Come and enjoy beautiful flowering iris by the Indiana Dunes. Only 1 hour drive from downtown Chicago. View 624 varieties of top quality plants including dwarf bearded iris, Siberians, miniatures, recumbent, and the popular tall bearded.

Oakhill Garden offers numerous varieties in vibrant colors, solid and bicolor, frilled and lacey. All our iris are sturdy, hybrid stock proven for this growing zone.

Come talk to the experts and find out:

- How to order your iris for summer delivery
- Where to plant iris for best effect
- About companion plants that complement iris
- Which varieties are suitable for small gardens
- Techniques for watering, fertilizing, dividing, transplanting, and grooming.

For more information please phone 219.714.2489, or
email admin@oakhillgarden.com, or visit our website

<http://oakhillgarden.com>

Phone ahead for appointments to view our beautiful flowering perennials starting from early spring to mid July—Snowdrop Iris to the Daylilies and reblooming iris even later! Call or email for a catalog.

Come out have some fun and enjoy the beautiful spring flowering plants!

Visit the webpage for the Canadian Iris Festival Held in Bristol Quebec on June 11/12 or call 877.848.3209



Iris—the Rainbow Flower

The tremendous increase in iris breeding efforts, the subsequent increased flowering period, and wide spectrum of colors provide unlimited gardening potential for the home gardener.

What better way to improve both the aesthetic and financial value of your home and garden than planting long-lived, hardy perennial iris. They surpass orchids in beauty! They are disease resistant, impervious to the growing problem of deer foraging and they come in so many colors that the gardener has an unlimited palette to decorate with.

Try some of the MTB in your container plantings—the wonderful shape of the leaves provides a foil for other plants long after the bloom has faded. Or, grow a row of tall bearded iris along your drive.

- Acoma** TB EM 34 in. tall \$12.50
(Mager 90) Wide graceful flowers. Sky Blue wide standards with darker blue-violet plicata markings on ruffled ivory falls. *AM*
- Acrobat** TB EM 35 in. tall \$10.50
(Williamson 80) Ruffled with standards of silver-lilac infused with amber plum; falls same with amber hafts & amber-plum borders.
- Actress** TB EM 35 in. tall \$12.50
(Keppel 76) Top quality performer. A ruffled self, the color of spring wisteria, tucked and ruffled. Tangerine beards. *AM*
- Aegean Star** TB EM 30 in. tall \$12.50
(Pleugh 72) Deep violet plicata, pure white ground. Beards violet. *HM*
- Afternoon Delight** TB M 36 in. tall \$11.75
(Ernst 85) Lightly laced lavender standards highlighted by the light golden tan. Lavender falls with golden tan border, golden shoulders with yellow beards. *AM*
- Almaden** TB M 36 in. tall \$12.50
(Maryott 90) A smooth dark red maroon like the red wind of Almaden Valley, CA. Sunfast and no haft markings. *HM*
- Altruist** TB EM 37 in. tall \$12.50
(Schreiner 87) Ruffled and fluted cool azure, lightening to chalk white around midrib and along beards. Graceful and fresh. *AM*
- Amber Snow** TB E 36 in. tall \$12.50
(Blyth 87) Ruffled amonena, pure white standards, amber apricot falls, bright tangerine beards.
- Aphrodisiac** TB M 36 in. tall \$12.50
(Schreiner 86) Lightly ruffled petals luscious shaded apricot and shrimp. Finely sculptured shining pearl luster. *HM*
- Appreciation** TB M 38 in. tall \$12.50
(Hager 83) Buff-tan standards with rounded orchid-lavender falls and yellow beards. Deeply fluted flowers on well branched stalks.
- At Dawn** TB EM 29 in. tall \$12.50
(R & L Miller 88) Lemon yellow standards, falls slightly deeper with deep aureolin yellow hafts and beards.
- Aztec Dance** TB M 34 in. tall \$12.50
(Blyth 80) Cream standards and white falls with violet plicata border. Yellow beards.
- Babbling Brook** TB m 38 in. tall \$12.50
(Keppel 66) Excellent light blue self light yellow beards. *DM, AM, HM*
- Barefoot Boy** TB M 36 in. tall \$12.50
() Light blue standards and falls. Vigorous grower. Excellent for bank stabilization.
- Beautiful Vision** TB M 38 in. tall \$12.50
(Schreiner 90) Bright tangerine beards stand out on this rose-pink flower with laced edges. *HM*
- Beckon** TB M 40 in. tall \$12.50
(Daling 74) Rosy violet purple plicata on pure white. Yellow beards.
- Best Bet** TB E 36 in. tall \$12.50
(Schrenier 88) Light wisteria blue standards contrast against deep hyacinth falls. Vigorous growth habits. Excellent. *AM, HM*
- Black Dragon** TB ML 36 in. tall \$12.50
(Schreiner 82) Intense black, medium sized flowers and extra velvety falls. *HM*
- Blazing Sunrise** TB EM 35 in. tall \$12.50
(Black 85) Pink amoena. White standards lightly veined pink and vibrant, bright coppery pink falls, brilliant orange beards. *HM*
- Blue Chip Pink** TB M 34 in. tall \$12.50
(Niswonger 89) Fragrant pink with hint of lilac. Tangerine pink beards tipped blue. *AM*

- Bohemian** TB EM 37 in. tall \$12.50
(Schreiner 88) A ruffled novel blend of tan, yellow and lavender. Well branched and sturdy stalks. *HM*
- Breakers** TB ML 37 in. tall \$12.50
(Schreiner 86) A very ruffled, bubbly and effervescent medium to deep blue. A superb iris. *AM*
- Bronze Sculpture** TB M 39 in. tall \$12.50
(Gatty 84) Lightly laced golden bronze blend. *HM*
- Cayenne Pepper** TB EM 37 in. tall \$12.50
(Schreiner 86) A spicy elegant hot red with tangy orange beards and style arms. A rugged robust grower with neatly tailored flowers on multi-budded well branched stems. *HM*
- Charger** TB EM 29 in. tall \$12.50
(Stahly 85) A wild ruffled deep red with falls slightly deeper. *HM*
- Cheesecake** TB M 34 in. tall \$12.50
(Gaulter 84) A luscious flesh pink, white area in center of the falls. Apricot hats and coral beards.
- Chief Waukesha** TB ML 36 in. tall \$12.50
(Blodgett 78) Oxblood red self, reddish beards. Well branched and vigorous. *HM*
- Codicil** TB EM 33 in. tall \$12.50
(Innerst 85) Medium blue self with near black beards. *AM*
- Color Glory** TB L 36 in. tall \$15
(Black 99) Rose purple falls with purple orange beards.
- Columbia Blue** TB EL 38 in. tall \$12.50
(Schreiner 78) Well substantiated blue with whitish beards. Lots of buds make a long bloom season. *HM*
- Copper Top** TB ML 38 in. tall \$8.50
(NA) Standard copper bronze, beards a variation. Great contrast for violet or wine iris.
- Designing Woman** TB EM 36 in. tall \$12.50
(Gatty 90) Lavishly laced deep violet standards with heavily ruffled smooth pearly lavender falls, darker violet edges. Bright tangerine beards. *AM, HM*
- Bold Gold** TB M 35 in. tall \$12.50
(Gatty 88) Ruffled and flared bright dandelion gold, orange beards. *HM*
- Bright Reflection** TB ML 34 in. tall \$12.50
(O. Brown 87) Ruffled deep salmon self, red beards.
- Canary Yellow** TB ML 30 in. tall \$12.50
(NA) Bright cheerful clear yellow. Solid performer. Useful as contrast to bicolors or blues/purples.
- Champagne Elegance** TB EM 34 in. tall \$12.50
(Niswonger 87) Rebloomer. Apricot amoena near white standards and ruffled falls of blended buff, apricot and peach. *AM*
- Charisma** TB L 34 in. tall \$12.50
(Blocher 77) Exceptionally well formed and broad petaled medium blue, harmonizing lemon yellow beards. Lovely rugged blue.
- Cherub's Smile** TB M 38 in. tall \$12.50
(Schreiner 82) Happy flamingo pink beauty. Smooth pink self and flawless branched stem. *HM*
- Clarendon** TB M 38 in. tall \$12.50
(Gaulter 76) Rosy pink blend with good garden carrying power. *HM*
- Color Coded** TB ML 30 in. tall \$16.94
(Rawlins 82) Standards are a clear light blue, falls develop a deep intense near black violet creating a dramatic contrast.
- Color Splash** TB M 37 in. tall \$12.50
(Schreiner 80) Lightly laced bicolor. Rich orchid-pink standards and rose falls. Tangerine red beards. *HM*
- Copper Glaze** TB ML 36 in. tall \$7.50
(NA) Ruffled copper with bronze flecks. Strong consistent color, holds up well in heavy rains or drought.
- Deep Fire** TB M 37 in. tall \$12.50
(Schreiner 79) Wide-petaled elegant rich velvety red self with harmonizing beards. Good substance and texture. *AM*
- Distant Chimes** TB E 38 in. tall \$12.50
(Schreiner 77) Standards light yellow and orchid lavender falls.

Eagle's Flight TB EM 35 in. tall \$12.50
(Schreiner 86) Brilliant rosy toned plicata. 1/2 "rich rose grape margin is accented by white centers on falls. Standards a lighter shade of rose lavender. AM. *AM*

Effervescent TB EM 35 in. tall \$12.50
(Mohr 80) Tall and vigorous very lacy light blue.

Exhuberant TB EM 32 in. tall \$12.50
(Mohr 81) Standards orange, falls white with precise orange border. Petals ruffled and falls flared. *AM*

Femme Fatal TB ML: 35 in. tall \$14
(Gatty 88) Pale pink standards and slightly creamier falls, flame orange with bright tangerine beards. Exquisitely laced and ruffled. *HM*

Fiesta Time TB M 35 in. tall \$12.50
(Schreiner 86) Dashing variegata. Falls velvety mahogany red. Standards exquisite in contrasting golden amber tones. Brilliant gold beards.

Fort Apache TB M 39 in. tall \$12.50
(Schreiner 82) A vibrant red beauty with 5 branches plus spur. Budding is double socketed giving 12 buds per stem. *HM*

Frisco Follies TB ML 38 in. tall \$12.50
(O. Brown 83) Lacy white edges surround pink standards. White falls, pink shoulders and coral beards. This is a classic plant that shows well with any dark/black iris. Number 1 plant!

Gay Parisol TB M 30 in. tall \$12.50
(Schreiner 74) Lacy amoena, crowned silver white and rose purple falls. *AM*

Going My Way TB ML 37 in. tall \$12.50
(Gibson 72) Deep pansy violet banded plicata on a white ground. Bluish beards. *AM*

Good Show TB M 35 in. tall \$12.50
(Hager 88) Ruffled bright orange center infused pink, tangerine beards. *AM*

Gypsy Romance TB ML 37 in. tall \$12.50
(Schreiner 94) Ruffled rich violet-mulberry with blue-purple beards. Large well formed flowers. *AM*

Heartland TB M 32 in. tall \$9.50
(Kerr 95) Light pinkish tan and tangerine beards.

Edith Wolford TB M 35 in. tall \$11
(Hager 86) Stunning bicolor. Ruffled light canary yellow standards and medium blue violet falls. *DM*

Epicenter TB EM 42 in. tall \$10
(Ghio 94) Black cherry apricot standard with black band.

Fashionable Pink TB EM 35 in. tall \$12.50
(Schreiner 76) Standards orange, falls white with precise 1/4 " orange border. Petals ruffled and falls flared. *HM*

Fiery Chariot TB M 36 in. tall \$12.50
(Schreiner 84) Vibrant orange with bright tangerine beards.

Firebreather TB L 37 in. tall \$22.50
(Schreiner 92) Vibrant orange with bright tangerine beards. *HM*

Fringed Lace TB VE 30 in. tall \$12.50
(Rudolph 80) Petals with a subtle coloration of alabaster cream highlighted by a band of lemon yellow. *HM*

Gallant Moment TB M 40 in. tall \$12.50
(Schreiner 80) A vigorous smooth glossy red. Very tall and well branched with 4-5 branches and up to 10 buds. Fragrant. *HM*

Generosity TB EM 36 in. tall \$12.50
(Keppel 79) Very wide and ruffled cream, a deeper cream wash and lemon shoulders, trace of lace. Good branching and bud count. *HM*

Gold Galore TB M 35 in. tall \$12.50
(Schreiner 78) Radiating deep rich golden yellow self, beards and all. *AM*

Great Lady TB ML 36 in. tall \$12.50
(Simon 82) Ruffled and laced flesh pink self. Peach pink beards.

Gypsy Woman TB EM 35 in. tall \$12.50
(Schreiner 85) Reblooming. Unique beauty. Light rose orchid band edges, creamy falls. Luminescent light yellow; F. is cream white, edged rose orchid with mid-yellow beard; ruffled. *AM*

Heavenly Blue TB ML 36 in. tall \$12.50
(NA) Intense deep blue standards and falls. Stands up well in winds and heavy rains.

- Heavenly Rapture** TB M 39 in. tall \$12.50
(Schreiner 89) Ruffled flared and laced white self. Orange beards.
HM
- Horni Lori** TB M 36 in. tall \$12.50
(Hager 78) Fluted and closed standards are orchid with a touch of buff. Falls are rose, orchid, flared ruffled and laced. Yellow beards short orchid horns. Prolific bloomer.
- Inland Passage** TB L 36 in. tall \$12
(Gaulter 86) Violet blue with white beards.
- Jam Session** TB ML 40 in. tall \$12.50
(Schreiner 90) Yellow with red markings on falls. Showstopper flowers, useful for accent and borders.
- Karen Christine** TB ML 35 in. tall \$12.50
(Nesminger 85) White infused with magenta with bright red beards.
- Lace Artistry** TB M 36 in. tall \$12.50
(Aitken 88) Laced and ruffled warm peach-pink. Pink falls are cream around the tangerine beards. *HM*
- Lady Friend** TB E 36 in. tall \$12.50
(Ghio 81) Garnet rose shade in a class by itself. Tangerine bearded iris, excellent growth habit and bloom. *AM*
- Laughing Allegra** TB L 36 in. tall \$12.50
(NA) Bicolor tan, gold and purple. Vigorous grower. Good for bank stabilization.
- Lorilee** TB ML 37 in. tall \$12.50
(Schreiner 81) Ruffled rose orchid extra broad petals. Well branched and mutli-budded, heavy substances. *AM*
- Lynn With Love** TB M 40 in. tall \$12.50
(Boushay 73) Lacy orchid lavender, paler falls, red beards.
- Mesmerizer** TB M 37 in. tall \$12.50
(Byers 91) Large flaring pure white. Newest rage in velvety iris. Frilled flounces protruding from the tips of the beards. *DM*
- Mystic Lace** TB VE 36 in. tall \$12.50
(Aitken 90) Light violet standards and dark falls.
- Honky Tonk Blues** TB ML 37 in. tall \$12.50
(Schreiner 88) Distinctive ruffling with blending shades of blue and white. Blue violet is streaked with swirling white etching. Well branched strong stems. *HM*
- Immortality** TB M 30 in. tall \$18.50
(Zurbrigg 82) Reblooming . Ruffled pure white; white beard; slight sweet fragrance. Most of all rebloomers have this plant gene. It really is immortal! *AM*
- Interpol** TB ML 37 in. tall \$12.50
(Plough 73) Purple-black self, purple beards tipped mustard. *HM*
- Jesse's Song** TB EM 35 in. tall \$12.50
(Williamson 83) A white ground plicata with wide sanded methyl-violet edges. Generously ruffled form, good grower. Choice. *DM*
- Katy Bug** TB ML 30 in. tall \$12.50
(B. Brown 84) Very pretty iris. Tan rose standards, rosy violet falls.
- Laced Cotton** TB ML 36 in. tall \$12.50
(Schreiner 80) Very heavily laced immaculately clean pure white. Beards and half centers are all pure white. Very ruffled. *AM*
- Late Report** TB ML 36 in. tall \$12.50
(Varner 79) Laced and ruffled lemon yellow. Beards deeper yellow.
- Lord Jeff** TB ML 36 in. tall \$12.50
(K. Waite 81) Majestic ruffled dark violet, matching beards tipped yellow. *AM*
- Lullaby to Spring** TB EM 38 in. tall \$12.50
(Schreiner 87) Subtle pastel tones of pure lemon yellow standards and soft lavender falls. *AM*
- Maverick's Game** TB L 32 in. tall \$14
(Miller 96) Old gold standards with violet plum edged falls.
- Midnight Dancer** TB EM 36 in. tall \$18.50
(Black 91) Ruffling and flaring deep indigo-black. Well branched, large flowers with excellent substance. *HM. HM*
- Navejo Jewel** TB EM 37 in. tall \$12.50
(Weiler 84) Ruffled medium blue, turquoise influence. Bright yellow beards. *AM*

- Nedde Point** TB VE 33 in. tall \$12.50
(Schreiner 83) Delicately stitched white ground plicata. Ruffled falls sharply marked, one half inch rosy plicata stitching. *HM*
- Orange Slices** TB ML 33 in. tall \$12.50
(Niswonger 87) Subtly orange and pink tones produce an unusual color with bright orange beards. Strong and vigorous. *AM*
- Pink Encore** TB E 30 in. tall \$12
(Smith 83) Rebloomer. Standards are pink with a shaded darker pink center.
- Pink Ruffles** TB ML 35 in. tall \$12.50
(NA) Classic beautiful iris with traditional form ideal for border and accent beds.
- Purple Bee** TB ML 41 in. tall \$12.50
(NA) Classic iris with rich Persian purple standards and falls and yellow beards with strong contrast. You can almost see a bee inside the flower blossom.
- Red At Night** TB ML 36 in. tall \$12.50
(Ernst 92) Rich velvety dark red with yellow beards.
- Ride The Wind** TB M 38 in. tall \$12.50
(Schreiner 91) Slightly ruffled and flaring clean blue amoena. Pure white standards and delft blue falls. *HM*
- Sky Hooks** TB EM 36 in. tall \$12.50
(Osborne 80) Ruffled and laced yellow standards, flaring white falls, ruffled yellow edges. Yellow beards blue horns. Fragrant. *AM*
- St Helen's Wake** TB M 42 in. tall \$12
(Ernst 83) Ruffled and laced blue white.
- Stop the Music** TB EM 37 in. tall \$12.50
(Schreiner 85) Pure white falls bordered 3/4" red and standards. Red and standards the same snappy red tone. Seven to eight buds. *HM*
- Sweet Mussette** TB ML 37 in. tall \$12.50
(Schreiner 86) Broad lacy flamingo and rosy bitone. Standards light pink lavender contrasting against rich rouge falls. Tangerine beards. *AM*
- Titan's Glory** TB EM 37 in. tall \$12.50
(Schreiner 81) Absolutely uniform dark violet. Well branched, high bud count. *DM*
- Night Ruler** TB M 39 in. tall \$12.50
(M. Hamblen 90) Ruffled deep inky purple with a black sheen, beards and all. *AM. AM*
- Pansy Grape** TB M 35 in. tall \$8.50
() A traditional purple grape solid with lighter petals. Strong performer year and after year with prolific blooms.
- Pink Memories** TB L 40 in. tall \$12.50
(Burger 85) Heavy blooming ruffled medium pink. A real winner.
- Punkin Patch** TB L 38 in. tall \$15
(Denney 88) Pumpkin orange self, beard tipped white.
- Raspberry Frills** TB M 39 in. tall \$12.50
(Schreiner 84) A bouncy whirly laced raspberry. A warm mulberry rose with a spot of white below the beard, excellent. *HM*
- Red Lion** TB EM 37 in. tall \$12.50
(Hager 86) Silken deep red with a touch of crimson. Dark ruby tone, smooth hafts and bronze beards. Lightly ruffled. *HM*
- Sapphire Hills** TB M 36 in. tall \$12.50
(Schreiner 71) Ruffled medium blue with chromatic-blue shading. Fragrant. *AM*
- Spectral Challenge** TB L 37 in. tall \$12
(Ernst 96) Yellow and white falls with yellow beards.
- Stepping Out** TB ML 38 in. tall \$12.50
(Schreiner 64) Rich blue-violet and white plicata. Large and out-standing. *DM*
- Strawberry Sensation** TB M 32 in. tall \$12.50
(Powell 78) Sensational ruffled strawberry pink self with red beards.
- Swingtown** TB L 36 in. tall \$12.50
(Schreiner 96) Mulberry claret self. Sweet fragrance.
- Tomorrow's Child** TB ML 36 in. tall \$12.50
(Blyth 84) Standards pastel orchid-toned pink. Falls rich velvety red-purple, 1/4 in. border matching standards. Beards tangerine red. Ruffled and laced. Australian origin. *AM*

Two-Tone Lavender TB ML 36 in. tall \$8.50
(NA) Bronze petals with lavender strips. Strong vigorous grower. *HM*

Unforgettable Fire TB EM 40 in. tall \$12.50
(Schreiner 90) Gracefully arched standards of rich red velvet with flaring ruffled falls. *HM*

Vision In Pink TB M 36 in. tall \$12.50
(Wood 87) Exquisite ruffled clear pink, lightening at center of falls to highlight bright orange beards. *HM*

Wabash TB M 34 in. tall \$12.50
(Williamson 36) Historic Iris. White standards with deep reddish purple falls, delicate white wire rim on edges. *DM*

Waltzing Princess TB M 37 in. tall \$12.50
(Simon 82) Ruffled orchid plicata with coral beards.

War Chief TB ML 36 in. tall \$12.50
(Schreiner 85) Sheer intense deep glossy red with a velvet like sheen. *HM*

Yaquina Blue TB M 37 in. tall \$12.50
(Schreiner 92) Large ruffled rich marine blue. Yellow beards tipped white. Extremely vigorous. *AM*

Yukon Fever TB ML 40 in. tall \$12.50
(Schreiner 86) Finely ruffled bright golden yellow consistently displays several perfect blooms at once. Excellent substance

THE FOLLOWING IRIS ARE SHORTER THAN THE TB AND ARE USEFUL FOR BORDERS, CONTAINERS OR OTHER NOVEL IDEAS.

Snow Drop White SDB E 11 in. tall \$8.50
(NA) Prolific and dependable for accenting tulip or daffodil beds.

Dotted Doll MTB M 18 in. tall \$12.50
(J & L Fry 86) White dotted blue with bronze beards. *HM*

Trajectory SDB M 16 in. tall \$0
(Black 97) Dark purple with white luminata patch and white beards. *HM*

Midget Yellow MTB E 16 in. tall \$12.50
(NA) Solid yellow flower. Prolific bloomer. Great accent plant with tulips and other early spring perennials.

Grandpa's Girl MTB M 16 in. tall \$12.50
(Fischer 84) Yellow standards and red-violet falls, edged yellow. *HM*

Peach Lavender MTB EM 16 in. tall \$12.50
(NA) Beautiful peach lavender color, almost a blush. Strong bloom producer.

Ozark Dream MTB L 22 in. tall \$16
(Fisher 91) Standards are medium violet and falls are dark purple.

Pixie Flirt MDB ML 8 in. tall \$12.50
(Willott 89) Ruffled white stitched red violet with cream beards tipped red violet. *AM*

Baby Pink MDB L 8 in. tall \$8.50
(A. Brown 75) Pale orient pink self with pink beards. *HM*

Sunny Song MDB M 7 in. tall \$12.50
(Willott 87) Light yellow standards and darker falls, pale yellow beards.

Red Pixie MDB E 5 in. tall \$12.50
(A. Brown 68) Rose-red large dark ruby-red thumbprint on falls. *HM*

Blushes IB EM 16 in. tall \$12.50
(Shoop 84) Delicious pink with pinker beards. Small flowers but spicy fragrance.

Blue Eyed Blonde IB ML 26 in. tall \$12.50
(Ensminger 89) Yellow self, with violet beards tipped blue. *AM*

Golden Zebra IB M 20 in. tall \$12.50
() I. Pallida. Golden striped foliage. Yellow and white zebra type leaves with dainty blue flower. Beauty and fragrant too.

Butter Cookie IB M 24 in. tall \$12.50
(Gatty 80) Bright yellow, yellow-orange beards.

Little Swinger (M. Hamblen 76) Luscious lightly ruffled apricot with red orange beards.	IB EM 22 in. tall	\$12.50	Magic Bubbles (Willott 94) Ruffled laced coral pink with coral beards.	IB M 24 in. tall	\$8
Perfume Shop (Keppel 98) White ground plicata with rosy violet wash blue white beards. Absolutely delightful like a mix of vanilla and root beer and old spice aroma.	IB EM 26 in. tall	\$12.50	Silver Zebra (NA) Pallida. Silver stripped foliage mauve-purple flowers. Fragrant. This iris is great for a shady location. Its fronds flicker light in the dark corners giving a playful attitude to your garden.	IB 20 in. tall	\$12.50
Sunny Honey (Shoop 85) Ruffled bright orange self with red beards. <i>HM</i>	IB M 16 in. tall	\$12.50	Lady Emma (F. Jones 86) Primrose yellow with yellow beards make Lady Emma an aristocrat in the flower garden. She holds her head high and with good reason! <i>HM</i>	BB M 24 in. tall	\$12.50
Leopard (NA) Red and yellow traditional favorite. Very vigorous grower and lots of blooms. You'll enjoy this iris and be able to share with friends and neighbors.	BB EM 24 in. tall	\$7.50	Pink Bubbles (Hager 79) Light pink self with pale tangerine beard creates a real show stopper in your perennial bed or container or window box. Passersby will stop and stare in wonder.	BB EM 20 in. tall	\$12.50
Blue Reflection () Reflects the blue of a June morning sky with clear blue self and blue beards. A winner in every sense.	BB EM 24 in. tall	\$12.50	Early Bird () Royal purple with pink-whitish self rosy hued beard and classic shape. Perfectly at home in the perennial bed or by itself in a mass planting.	BB E 22 in. tall	\$12.50
Rabbing Knot Dark blue-purple solid color that offsets a yellow marigold perfectly in a mixed perennial and annual bed. It is a slow grower and needs some extra attention to keep it performing.	BB M 24 in. tall	\$12.50	Wild Pseudacorus (Native) Yellow Flag that naturalizes in wet places or pond edges, but does equally well in the garden. Bright yellow blooms, lightly veined viole-brown on the falls. A favorite of pioneer gardens. A large bullrush-like clumps of foliage.	SPEC L 48 in. tall	\$18.50
World Premier (Schreiner 98) Stunning icy white standards contrast with the inky blue-purple color of its falls. Falls are ringed with a wire-thin band of white which highlights the gentle ruffling. Very vigorous. <i>HM AM Wister Medal 04.</i>	BB in. L 22 tall	\$12.50			



Specially Designed and Priced Iris Collections for your pleasure!

Sunny Days-offers great value and superb hues of colors that stun the beholder. The beautiful textures and substance of this group lends credence to the old saying that flowers are simply a miracle. The yellow sun, blue skies and white skies colors are highlighted. Includes: **Barefoot Boy, Color Coded, Leopard, Immortality (RE), and Canary Yellow**—\$34.00 a saving of \$18.00.

Chiffon-offers the deep, impassioned color palette that artists dream of. Yellows, pinks, blues and maroon all timed for exquisite profusion of blooms. Order this now and start planning your new perennial bed around this super collection. Includes: **Lady Emma, Champagne Elegance (RE), Amber Snow, Blue Chip Pink, and Bronze Sculpture**—\$38.00, a saving \$24.00

Parade-Everyone loves a parade! And with this collection you will be marching down the garden lane with pride and joy drenched in colors that are earth-inspired, and eye popping. Vibrant candy colored flowers, spicy hues that stand out in any garden. Includes: **Cayenne Pepper, Bold Gold, Cheesecake, Clarendon, Copper Glaze and Horni Lori**—\$36.00, a saving of \$16.00

Rainmaker-offers a sea of color, vibrant blues contrasting with warm glows of pink bicolors complimentary to the stormy moods associated with a change in the weather. A classic mixture of unique timeless design. Includes: **Lord Jeff, Two-tone Lavender, Lemonlime, Pansy Grape, Purple Bee, and Copper Top**— \$32.00



Siberian Iris

have many characteristics suitable to today's sustainable urban landscape practices. They are extremely hardy and require minimal maintenance. They provide drought and moisture tolerance, pest and disease resistance, shade tolerance, soil adaptability, and are not invasive. Their spring flowers flutter like dancing butterflies above grass-like foliage. And they offer variety in height, texture, form, and seasonal interest. These traits make Siberians ideal for private and public gardens in formal or natural settings.

- Anne Dasch** Siberian EM 36 in. \$9
(Varner 78) Flower is edged in solid deep navy blue. Center dappled with light and dark blue. *1983 Morgan Award Winner*
- Annick** Siberian M 12 in. \$9
(McEwen 86) A dark violet-blue veined darker on the falls and with a white signal.
- Aqua Whisper** Siberian M 36 in. \$9
(Miller 87) Standards are white, lavender at base. Falls are lavender, veined violet-blue with a fine white edge and whit-blue signal. *1995 Morgan-Wood medal.*
- Ausable River** Siberian L 30 in. \$9
(Cassebeer 69) A solid deep lobelia blue. Eye catching flower as well as excellent foliage. A strong grower.
- Baby Sister** Siberian EM 6 in. \$12
(McEwen 86) Light blue, veined darker on falls with white signals. Dwarf iris (excellent parent for little ones).
- Big Blue** Siberian E-L 36 in. \$9
(McEwen 70) A large flower over 5 inches in size. Near true dark blue.
- Blue Pennant** Siberian EM 30 in. \$9
(McEwen 72) Dark violet blue flowers with a velvety texture. Large tetraploid flowers.
- Cabernet** Siberian M 34 in. \$9
(Hager 82) Deep red wine with even deeper styles and white veined signals. Nice erect foliage and good color.
- Creaser's Brother** Siberian E-M 40 in. \$9
(Morgan 32) An older but reliable variety in deep royal blue with attractive antique gold veining on the falls. Strong upright foliage.
- Chilled Wine** Siberian M 38 in. \$9
(Hager 81) Wine red with blue veining at the midrib of the style arms. The falls are blue in the center.
- Cobalt Blue** Siberian M 44 in. \$9
(NR) Deep blue-purple standards and falls. Gold to white blaze on the falls. Small upright flowers on stalks that stand high above foliage.
- Crème Chantilly** Siberian ML 36 in. \$9
(McEwen 81) Flowers are ruffled. Pale cream self fading to white with age.
- Darn Desire** S M 30-36 in. tall \$9
() Beautiful blue with white centers make this Siberian truly a wonder in the perennial bed. A beautiful blue edged flower petal with stunning white interior patches, veined and swirling.
- Dear Delight** Siberian EM 28 in. \$9
(McEwen 75) Large, light satin blue flowers with a pure white blaze.
- Dreaming Spires** Siberian M 32 in. \$9
(Brummit 66) A must for Siberian lovers. Large flowers. The standards are lavender, very wide and stand out from the flower. Falls are royal blue with darker hafts. Heavy bloomer.
- Dreaming Yellow** Siberian ML 31 in. \$9
(McEwen 71) Crème white standards with yellow crème falls. Very nice, wide flaring form.
- Ewen's** Siberian EM 32 in. \$10
(McEwen 71) Light blue and ruffled like lace. Ewen's is a Siberian iris that provides beautiful foliage and flower emphasis in the garden.
- Flight of Butterflies** Siberian M 33 in. \$10
(Witt 72) Small, delicate flowers. Violet blue self with wing shaped falls. The name is graphically descriptive.

Fourfold Whites Siberian E-L 36 in. \$14
(McEwen 70) Large clear white flowers with yellow hafts. Strong grower. Tetraploid.

Harpwell Happiness Siberian EM 30 in. \$10
(McEwen 83) Very full, creamy white flower with yellow at throat. Ruffled round and flared with full flower look. Tetraploid.

Illini Dame Siberian ML 34 in. \$17
(Varner 87) Medium rose lavender standards with falls just a lighter darker. Light aqua lavender midrib. Tetraploid.

King of Kings Siberian ML 33 in. \$12
(Varner 82) White with green veining and green shaft on falls. Excellent plant. *1990 Wood Medal*

Lady Vanessa Siberian M 36 in. \$11
(Hollingworth 86) Ruffled red-violet falls with wide, light wine red standards and lighter still, orchid style arms. Vigorous. *1992 Morgan-Wood Award*

Moon Drummer Siberian ML 32 \$9
(Newhardt 72) Very dark blue to violet self. Elegant bloom.

Orville Fay Siberian ML 36 \$9
(McEwen 70) Large flaring falls light to medium blue self flower with particularly fine foliage.

Pansy Purple Siberian ML 34 in. \$9
(McEwen 71) A beautiful soft velvety true pansy purple color. Forms a gorgeous clump.

Pirate Prince Siberian ML 28 \$10
(Varner 77) This is the deepest and richest of the royal blue-purple Siberians. Solid color with no signals.

Raspberry Snow Siberian ML 36 in. \$22
(McGarvey-Wadekamper 91) An exceptional Siberian. Almost white standards. Raspberry pink falls.

Roanoke's Choice Siberian EM 32 in. \$9
(McGarvey 75) Opens pink and changes to violet.

Gull's Wings Siberian VL 38 in. \$14
(McGarvey-Wadekamper 89) Beautiful white flower. Very wide slightly ruffled flaring falls with wide standards. Upright foliage.

High Standards Siberian M 44 in. \$10
(Hollingworth 87) Dark blue-purple self with small white and golden yellow signal on falls. Tetraploid. Tall garden aristocrat.

It's Delightful Siberian M 36 in. \$14
(Johnson 88) Wisteria blue with darker veins and antique gold signal on a small white area.

Lady of Quality Siberian ML 34 in. \$11
(McEwen 82) A beautiful violet blue with a hint of silver edge. Very large flowers. 6" across. Wide foliage.

Marilyn Holmes Siberian M 27 in. \$9
(McEwen 72) A rich blue color with very wide petals and excellent form.

Navy Brass Siberian ML 36 in. \$9
(McEwen 73) Dark navy blue standards with contrasting brassy gold signals. Falls are slightly darker navy blue.

Over In Gloryland Siberian M 34 in. \$14
(Hollingworth 92) Standards are a dark royal purple. Falls are a velvety royal purple with a cream blaze. Ruffled with a metallic gold signal. Tetraploid. One of the best Siberians.

Peg Edwards Siberian M 36 in. \$9
(McEwen 75) Large flowered tetraploid. Light violet-blue standards with flaring falls that darken at shoulders.

Quite Shape Siberian M 27 in. \$9
(Tamberg 84) A gorgeous soft blue self. Excellent foliage. Compact plant.

Readt Made 16 in. tall \$9
() Readt Made is a dark pink/blue Siberian with good lasting power and excellent foliage.

Royal Herald Siberian E 36 in. \$9
(Scheffy 48) Dark purple flowers with wide pendant falls.

Sea Shadows Siberian M 38 in. \$9
(Brummit 64) Dark blue falls blending out to a lighter blue. Medium blue standards. Heavy bloomer with some branching.

Shirley Pope Siberian ML 29 in. \$9
(McEwen 79) Very velvety, textured reddish purple falls with a white signal. Attractive form and showy.

Silver Edge Siberian EM 27 in. \$9
(McEwen 74) Flaring and ruffled flowers of medium blue. Falls are re-circled by a distinct silver edge and marked with a yellow-white blaze. Tetraploid. *1978 Morgan Award*

Simple Gifts Siberian M 30 in. \$9
(Hollingworth 94) Falls are quite large and round, held horizontally, and without a trace of ruffling. Almost white with a faint overlay of violet-blue. Standards and style arms are white.

Steve Varner Siberian M 29 in. \$12
(Briscoe 76) Standards and falls are lavender, veined lavender-blue. Ruffled; bright blue style arms. *1987 Morgan-Wood Medal*

Temper Tantrum Siberian M 34 in. \$11
(McGarvey-Wadekamper 69) Wine red with a blue wash ruffled form self. Very unusual. Mid season with some re-bloom. Looks great combined with Appaloosa Blue.

White Swirl Siberian L 40 in. \$9
(Cassebeer 57) Pure white self wide flaring falls. Heavy bloomer. Has stood the test of time and is still one of the best whites. Always puts on a show for late season.

Wine Wings Siberian EM 30 in. \$9
(Varner 76) Standards and falls are a medium wine red with white signals on falls. Bright green foliage.

Wisely White Siberian L 38 in. \$9
(Wisley RHS 40) A clear white with bright yellow blaze on falls. Pure white standards. Neat foliage.



Siberian Iris Growing Guide

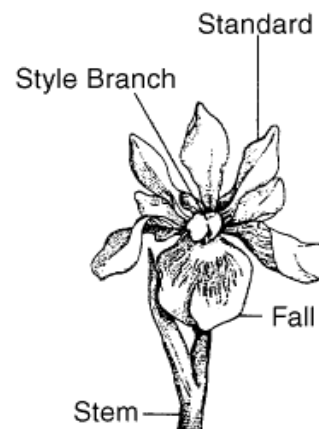
Beardless Iris, last for years in the garden and are easily transplanted in the early spring or fall. They like lots of water when it is dry and are a classic meadow species that gives your garden a wild touch. Once the flowers are gone the foliage provides a wonderful grass-like appeal to the perennial bed.

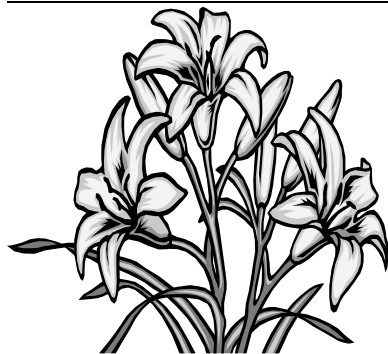
Thoroughly water the iris at the time of planting and for the first couple of months after planting, not allowing the plant to become dry. Traditionally, early fall is the best time for planting bare-root material as it gives roots and rhizomes a chance to anchor before winter. In our northern climate spring planting also can be successful. Transplanting with a root ball of soil avoids transplant shock. Spring-planted Siberians may be expected to flower the following year. Fall-planted irises cannot be expected to flower until the second year. To maintain abundant bloom and vigorous growth you can transplant Siberians every six to nine years. Divide clumps with a fork or spade, and remove old roots and rhizomes from the center. Transplant the outer portions as you would new plants. Siberian Irises are moderate feeders.

The Siberian Iris species are meadow plants and prefer the abundant moisture found in spring meadows and streams. In contrast, common bearded irises are steppe plants and thrive in sunny, dry conditions where their rhizomes are baked. The moisture loved by Siberian Irises will rot their bearded cousins. Siberian species thrive in meadows in constant competition with grasses and other herbs, so they are great for natural perennial borders and can hold their own with aggressive plants.

Use Siberian Iris in perennial beds where their grass-like leaves provide wonderful naturalistic accents after the blossoms are gone. There is nothing more stirring than a large clump of Siberians waving in the summer breeze. They can also be used as a standalone grouping near water on the banks of a pond or a stream.

The picture to the right shows the parts of the Siberian flower.





Daylily Flowers

Hardy dependable bloomers with a wide ranging selection of height, color, season of bloom, the modern daylily is a far cry from what grandma grew! The Chicago Series was developed by James Marsh. An amateur hybridizer, working in his small garden, he was responsible for introducing some of the finest lavender and purple tetraploid daylilies available. Before his death in 1978, Marsh made arrangements with Charles Klehm and Sons Nursery to acquire his stock and to release the daylilies that he would not live long enough to register. Be sure to check them out! They are identified by the Chicago as part of the name.

Always a Pleasure M 5" 27" tall \$24
(Rasmussen 97) Always a Pleasure is a golden yellow with distinct red eyezone and some picotee on petal edges. Form is full and round. Always opens well. Study scapes, with a high bud count. Sometimes doubles. Grows very quickly. Tetraploid.

Autumn Minaret L 7" 66" tall \$12
(Stout 51) A wonderful very tall addition to the late summer perennial garden. Attractive gold with rust colored eyezone, rust overtones, bright yellow throat. Fragrant.

Big Bird E-M 7" 34" tall \$12
(Greisbach/Klehm 78) Enormous unique flower in bright yellow. Heavily ruffled with recurved petals. Green throat. Looks like a giant yellow canary in flight. Tetraploid and fragrant.

Chicago Apache M 4.75" 27" tall \$10
(Marsh/R. Klehm 82) A standout in the garden with its brilliant scarlet color. Flower is ruffled and round. Tetraploid.

Chicago Fire M 6" 34" tall \$10
(Marsh 73) Bright red with a distinctive yellow stripe on the midrib. Tetraploid.

Chicago Knockout M 6" 25" tall \$12
(Marsh/R. Klehm 80) A combination of plum petals with ivory center and yellow cream ruffled edges. Large bloom. Tetraploid.

Chicago Picotee Lace M-L 5" 30" tall \$12
(Marsh) Famous picotee lace pattern that thrills the gardening enthusiast. Look to this one for splendid azure core and white borders. Good grower with lots of stamina. One of our best flowering species to date. You will want to add this to your garden for sure.

Chicago Scintillation E 5" 22" tall \$10
(Marsh/R. Klehm 80) Attractive plum self with silvery midrib and a wire edge. Plum halo. Tetraploid.

Asiatic Pheasant M-L 6" 22" tall \$12
(Knower 73) A spider variant. Yellow self with green throat.

Barbara Mitchell M 6" 20" tall \$18
(Pirce 84) Terrific ruffled pink self with a green throat. Stout silver medal winner 1992.

Catherine Neal VL 6" 30" tall \$16
(Carpenter 81) A nicely ruffled dark purple with lighter mid ribs and lime green throat. Very sun fast.

Chicago Arnie's M-L 5.5" 28" tall \$13
(Marsh-Klehm '81 83) Purple with plum halo and green throats.

Chicago Firecracker M 5.5" 26" tall \$10
(Marsh 81) Lovely bright Chinese red with a green throat. Tetraploid.

Chicago Petticoat E-M 5" 24" tall \$12
(Marsh 80) Very ruffled, pale orchid with silvery highlights and a yellow throat. Tetraploid.

Chicago Princess M-L 6" 26" tall \$12
(Marsh) A royal pink for the Chicago Princess of wide fame. She is a temptress for bees and hummingbirds who flock to suck the nectar of this beauty who is not retiring.

Gold Lady M 4.75" 28" tall \$12
(80) A very bold golden daylily. Increase the light in your garden with this encapsulated sunshine.

- Chorus Line** E 3.5" 20" tall \$12
(Kirchoff 83) A ruffled pink with a rose band and a green throat. Early rebloom and very fragrant.
- Crystaline Pink** M 5" 25" tall \$22
(Stamille 82) Gorgeous diamond-dusted sun resistant clear baby ribbon pink with a green throat. Very flat, well-branched and budded. Ruffled. Tetraploid
- Distant Bells** L 6" 26" tall \$10
(Peck 78) A great season extender blooming into September. Loaded with big golden yellow blooms. Tetraploid.
- Gift of Love** M-L 6" 19" tall \$10
(Peck 73) A deep lavender rose self with a golden heart. Petals are crimped and ruffled. Tetraploid.
- Hint of Blue** M-L 5.5" 22" tall \$17
(Gage-Carpenter 90) Unusual lavender blue bi-tone with a light green throat. Fragrant.
- Lays Red Tree** M-L 3.5" 24" tall \$12
() Lays Red Tree constitutes one of those rare daylilies: it produces clear red blossoms sure to delight and it does so consistently year and year which is exactly what perennials promise. True to its name it branches beautifully with red flowers that will be the envy of your fellow gardeners!
- Paradise of Peacocks** M-L 5.5" 36" tall \$12
(Oakes 90) Parade of Peacocks by breeder Oakes in 1990 is a beautiful 37 inch tall blooming spider variant flower during the Middle Late flowering season. Peacock is a good name for this beauty with its 8 inch Rose Peach petals and with a Rose Eye. It is Dormat
- Raspberry Wine** L 5" 20" tall \$12
(Wild 80) One of our favorites. Ruffled and creped raspberry red which deepens and then blends into a gold heart.
- Condilla** E-M 4.5" 20" tall \$12
(Grooms 77) Deep gold self. A vibrant double gold self. Blooms shine in your garden. Performs well in all parts of the country. Award of Merit in 85, Ida Munson Award for the best Double 1984. Lenington Award for performance around the country.
- Dewberry Candy** M-L 3.5" 22" tall \$14
(Stamille 92) Ruffled, full cream with a bold purple eye and deep green throat. Purple picotee changes to gold halfway around each round, symmetrically placed petal. Flowers open early and flat. Good substance and heavily budded with 20-25 buds. Tetraploid.
- Flames of Fortune** 5.5" 30" tall \$12
(Peck 71) This royal beauty has a pale yellow base with a melon self. Set her against a green mass of foliage to see the stunning effect. Prolific bloomer with rebloom possible in the right zone. A must for the lily grower who thinks they have it all. Tetraploid.
- Grape Magic** M-L 7" 30" tall \$10
(Alter 77) Grape colored flower with a deeper eye zone. Yellow throat. Green heart.
- Indy Rhapsody** M-L 4.5" 19" tall \$16
(Anderson 91) Rose-red, edged with white on the sepals. Green throat.
- Painted Trillium** M-L 6" 24" tall \$12
() Painted Trillium echoes the woodland trillium so prevalent in the North American deciduous forest tracts. Pale pink with strong overtones of red and purple, it brings the wild native plant strains into your backyard. A delicate looking flower that is surprisingly tough.
- Queens Navy** M-L 6" 5.5" tall \$12
(Moldovan 86) Queens Navy is a great flower that is lavender with blended pink that flowers early to mid season. It has a 5.5 inch flower head and is a proud blooming lily that will be an outstanding producer of blooms in your garden. Try it, you will love it!
- Roll Tide** E-M 5.5" 26" tall \$18
(Webster 91) Another great daylily from Webster. Bright red self with small green throat. Tetraploid, fragrant, a real winner.



All our Daylily orders are shipped a full two-fan plant thus assuring you of double the flowering. All mother plants are organically grown with no pesticides or artificial fertilizer. We use, wherever possible a vermicompost supplement as much as for the structural improvement of the soil as well as mild complete nutritional value.



Tip Guy reminds us:

"Always be sure your tools are not left laying around. You don't want to step on a rake and get a handle up your nose. Even shovels should not be left laying.

Take the time to do a job right and clean your tools after using them. Remember the job is not done until the tools are put away."

Ruby Throat M-L 5" 21" tall \$9
(Greisbach/Klehm 79) A beautiful red on the blue end of the scale. Tetraploid.

Siloam Royal Prince M 3.5" 25" tall \$11
(Henry 83) Popular round ruffled cerise purple self. Excellent.

Stell D'Oro E-L RE 2.5" 12" \$8

(Jablonski 77) The star, blooming here heavily in June and early July, and again through most of August and all of September. A miniature with nearly round, nicely flaring, yellow-gold petals. This is the daylily you see blooming all summer long at businesses. Landscapers have used it extensively for their work so it is well respected.

Strutter's Ball M 6" 27" tall \$18
(Moldovan 86) A classic daylily. Deep blue purple with a small green throat and silvery white watermark. Branching and bud count are super. Very colorfast. Tetraploid.

Russels's Minuet L 4.5" 21" tall \$8
(Russel 45) A really nice dusty pink bicolor. This daylily has been in the garden for years and always puts on a great show late in the season. It is a very compact plant.

Silom Red Jay M-L " " tall \$12
(Henry) The Siloam series cannot be underrated in daylily breeding programs and this red beauty proclaims the endurance that the name Siloam engenders. Strong flaring red petals, fragrant and plentiful blooms give us lots to be thankful on earth.

Strawberry Candy E-M 4.25" 26" \$20
(Stamille 90) Award winning daylily that should be in every garden. Strawberry pink blend with rose red eye zone and golden green throat. Tetraploid.

Thousand Voices 4.5" 34" tall \$12
() No garden should be without this golden beauty. She is unrivalled amongst daylilies for profusion of sunshine filled blossoms. Rugged and tenacious flowers belie their fragility.

DAYLILY CULTURE TIPS

The name Daylily is derived from two words, meaning "beauty" (hemero) and "day"(callis) or "beauty for a day". It is considered a fibrous rooted perennial. Although individual blooms last for only one day, there are many buds and scapes on the same plant, producing a bloom season that lasts for many days. Many have a rebloom period, adding to their interest and usefulness as important components of your garden.

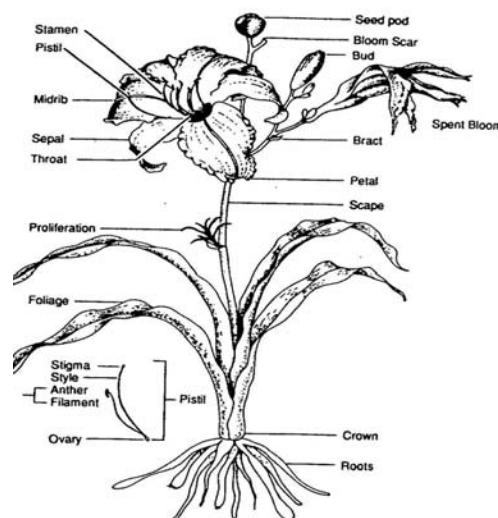
GENERAL CONDITIONS:

Daylilies are *amazingly* tolerant of over watering and under watering. They can be transplanted virtually any time of the year. Full or ½ day sun is ideal for most varieties. Reds, whites, and lavenders often benefit from partial shade (late afternoon). Yellows, oranges, peaches, pinks are usually the most sun tolerant. Each variety has a unique character. They include flowers with "eyes", "halos", "doubles", "spiders", "polychromes", "color blends", "reblooms", "extended blooms", "green throats", "yellow throats", in infinite diversity. The bloom season can begin as early as mid May and extend into September by using a wide variety of seasonal types.

Newer varieties generally have better petal substance, larger bud count, improved scape branching, and are often more vigorous and better-adapted plants

Planting Instructions

- If the plants are dry, soak new plants in water (only for a few hours). Do not leave for an extended time. If the plants are fresh, plant immediately.
- Dig a hole 9" wide and 12" deep. Mix in 1/3 compost or humus, 1/3 soil, 1/3 Perlite or vermiculite.
- Space plants 18-30" apart, depending upon variety size.
- Arrange the roots in the hole and backfill. **CRITICAL: MAKE SURE THE ROOT CROWN IS AT OR SLIGHTLY ABOVE THE SOIL LINE**
- Water very well and mulch with 3" of cypress mulch, pine mulch, oak mulch, etc.
- Give 1-2" water each week.
- Fertilize with organics or vermicompost after flowering.



Join in the Online Garden Club Forum

Participate in an online gardening club. Oakhill Garden sponsors this totally free forum where gardeners can come and write about their successes, complain about their troubles and generally just communicate with other like minded spirits. Our grower Tom Towle will act as moderator and try to answer questions about growing iris and daylily plants.

Login to <http://oakhillgarden.com> and follow the link to the Garden Club Forum

Reasons to Join:

- It's free
- You can meet other gardeners to give and get advice
- Gardeners can trade plants, swap stories and find out about the latest gadgets and if they work or do not work.
- Deer resistant plants are a hot topic.
- So don't wait! Jump right in and join a topic.
- The world will be a better place for it.

Our Moderator

Tom Towle is the owner/grower at Oakhill Garden Nursery. He was born and raised on a farm in the 1950s and experienced the rich life of a small mixed family farm. He worked at the National Capital Commission (NCC) in Ottawa Canada as a gardener, then as the Head Gardener at the Italian Embassy (former Blackburn lumber baron 6 acre estate featured in many landscape articles) in Ottawa for 5 years.



He ran a nursery/greenhouse business for 10 years growing perennials and bedding plants. During this period his business won numerous contracts to supply plant material for the City of Ottawa including Sparks Street, Ottawa City Hall and many parks throughout the city. He also oversaw planting 120,000 tulip bulbs for the city of Ottawa. During this time Tom wrote many gardening articles for area newspapers and magazines.

A growing interest in computers led Tom to get a Technical Writing Degree in 1991 and a new career which led him to Chicago in 1998. But the call of plants and the soil was too strong to ignore and he began to slowly build up a world class nursery of beautiful iris and daylilies. After finding a piece of land with the right soil in **NW Indiana** he opened his first US nursery. He still maintains his 25 acre mother nursery in Shawville Quebec which keeps him busy but never too busy to talk about gardening in general.

So try to test him on questions in the Garden Club Forum. It will keep his wits sharp!

Send in your digital photo of a beautiful iris garden and win a free iris!

Details on our website <http://oakhillgarden.com>

Oakhill Garden Nursery
410 Oakhill Road
Porter Indiana 46304



Oakhill Garden Nursery

410 Oakhill Road

Porter Indiana 46304

219.714.2489

1.877.848.3209

admin@oakhillgarden.com

www.oakhillgarden.com